

7

## TRENCH BOX ASSEMBLY

8

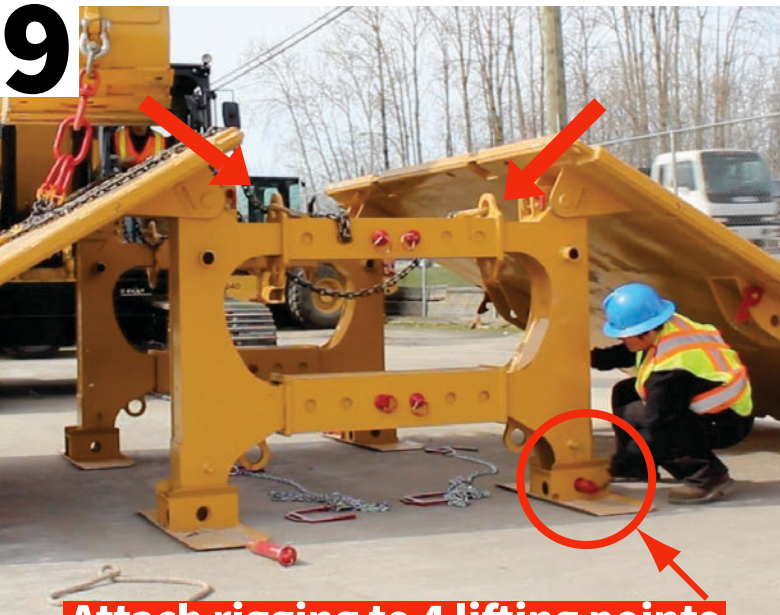


**Secured position**



**Repeat steps 4-7 on the second panel.**

9



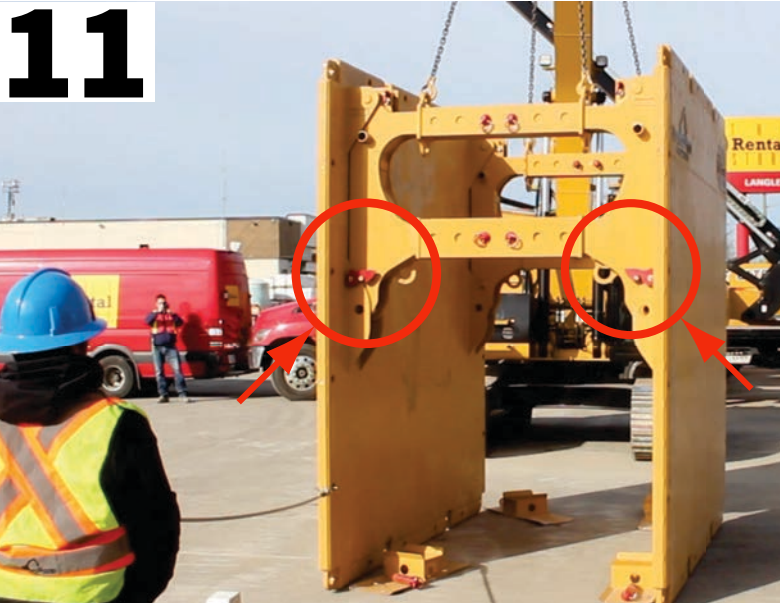
**Attach rigging to 4 lifting points on the strut. Remove strut pins.**

10



**Lift until panels are closed against the strut and box is fully off the ground.**

11



**Ensure all gravity locks are engaged. Then it is safe to lower to the ground.**

12



**keep tension on the rigging for pins to slide in easily.**

**Reinstall pins from strut stands, to lock panel and strut together.**